

## **Full Campus Evacuations During Large Scale Events**

LBCC's Incident Commander, City of Albany, Linn County, or Benton County EOC may order an evacuation for emergency purposes. LBCC main campus is within the Albany City limits and would generally fall under the direction of the City Police Department, likewise the Benton Center under the Corvallis Police Department and the Lebanon Center under the Lebanon Police Department. However, a large scale event may be coordinated by Linn County and Benton County Emergency Management through the respective sheriffs' departments. Also, if the evacuation area is contaminated by hazardous materials, the evacuation will be conducted by the Fire Department. Linn Benton Alert System and/or local police dispatch systems provide warning functions to notify affected persons of impending evacuations. LBCC additionally will provide warnings to the campus community via the mass notification ReGroup system.

The primary means of evacuation for most individuals will be personal vehicles; however, some individuals will need assistance in evacuation. The City will work to make transportation arrangements for individuals needing assistance, as resources are available. In large-scale evacuation with advance warning, pickup points may be designated for transportation. Information messages that emphasize the need for citizens to help their neighbors who lack transportation or need assistance will be used to reduce requirements for public transportation during an evacuation.

Two-way traffic will be maintained on all evacuation routes to allow continued access for emergency vehicles. For large-scale evacuations, traffic control devices such as signs and barricades will be provided by the Public Works Department upon request.

LBCC personnel will provide traffic control on each campus utilizing managers, Building Emergency Coordinators, and CERT team members not otherwise involved in managing the event. It may be necessary to recommend or require that specific evacuation routes be used after an earthquake, flood, toxic spill, or other event that necessitates control of traffic patterns to preserve emergency services and protect human life. The city and county evacuation plans and direction will inform the directions that LBCC campus traffic control provides community members that are leaving campuses.

1. The City (Public Works, Police, &/or Fire Department) has the authority to close local roads and to restrict access to and from all areas of the City.
2. Roads under the jurisdiction of the Oregon Department of Transportation (ODOT) (Highway 99 and I-5) would be authorized for closure by the ODOT District Manager; in the case of a crime or fire, the authority includes the Oregon State Police.
3. The City Police Department has the authority to remove stalled and parked vehicles that impede the flow of traffic.
4. Traffic flow direction may be altered, reversed, etc. at the direction of the local Incident Commander when the situation warrants.
5. Changes in traffic flow will be coordinated with the Linn and/or Benton County Sheriff, Oregon State Police, ODOT, and City Public Works. LBCC Public Safety and the LBCC

Incident Command group will work to maintain situational awareness of traffic flow in the local areas and communicate information to the LBCC community via the web page, ReGroup, email, traffic assistance personnel posted throughout the LBCC parking lots, and other media access available at the time.

### Identification of Need

Not all emergencies requiring protective action on the part of the public necessitate evacuation. The Incident Commander must weigh the risks of leaving the population unprotected against the risks of sheltering in place or evacuating. Before an evacuation can be implemented, the following activities must be performed:

- Identify high-hazard areas, including those that may be impacted if the incident escalates or conditions change.
- Identify potential evacuation routes, their capacities, and their vulnerability to the hazard through information provided by city and county Emergency Management.
- Alert and warn the campus community at risk. Include specific information about the risk, the protective actions that need to be taken, and the possible risks of non-compliance.

### Evacuation Zones

Areas to be evacuated will be determined by city officials with the authority to recommend evacuation. Evacuation recommendations to the campus community will clearly describe the area to be evacuated, with reference to known geographic features such as roads and rivers.

**In Albany**, LBCC falls within the South Albany Zone, Zone 2, for evacuation purposes. Each major street, road, or avenue in each zone is listed. When an evacuation is to be made due to a specific incident, the evacuation recommendation for Zone 2 will be used to make route recommendations to the main campus community.

| Boundaries   | Major Streets, Roads or Avenues   |   |
|--|---|---|
| <b>Zone 1 – Downtown</b>   |   |   |
| <ul style="list-style-type: none"> <li>• <b>North</b> – Portland and Western Railroad Tracks</li> <li>• <b>East</b> – Geary Street</li> <li>• <b>South</b> – Queen Avenue</li> <li>• <b>West</b> – Portland and Western Railroad Tracks</li> </ul> | <ul style="list-style-type: none"> <li>• Ellsworth</li> <li>• Elm Street</li> <li>• Highway 20</li> <li>• Lyon Street</li> <li>• North Albany Road</li> <li>• Pacific Blvd</li> </ul> | <ul style="list-style-type: none"> <li>• Queen Avenue</li> <li>• Riverside Drive</li> <li>• Springhill Drive</li> </ul> |
| <b>Zone 2 – South Albany</b>   |   |   |
| <ul style="list-style-type: none"> <li>• <b>North</b> – Queen Avenue and Grand Prairie Road</li> <li>• <b>East</b> – Interstate 5</li> <li>• <b>South</b> – Highway 34</li> <li>• <b>West</b> – Calapooia River</li> </ul>                         | <ul style="list-style-type: none"> <li>• 34th Avenue</li> <li>• Ellingson Road</li> <li>• Geary Street</li> <li>• Lochner Road</li> <li>• Pacific Blvd</li> </ul>                     | <ul style="list-style-type: none"> <li>• Seven Mile Lane</li> </ul>   |
| <b>Zone 3 – East Albany</b>  |   |   |
| <ul style="list-style-type: none"> <li>• <b>North</b> – Kamph and Murder Creek Roads</li> </ul>  | <ul style="list-style-type: none"> <li>• Grand Prairie Road</li> <li>• I – 5</li> </ul>   | <ul style="list-style-type: none"> <li>• Santiam Highway</li> <li>• Waverly Drive</li> </ul>                            |

|   |   |
|---|---|
| <ul style="list-style-type: none"> <li>• <b>East</b> – Scrael Hill and Kennel Road</li> <li>• <b>South</b> – Highway 34 and Grand Prairie Road</li> <li>• <b>West</b> – Geary Street and Interstate 5</li> </ul>  | <ul style="list-style-type: none"> <li>• Knox Butte</li> <li>• Pacific Blvd</li> <li>• Queen Avenue</li> <li>• Salem Avenue</li> </ul>  |
| <b>Zone 4 – North Albany</b>  |   |
| <ul style="list-style-type: none"> <li>• <b>North</b> – Willamette River and Polk County Line</li> <li>• <b>East</b> – Willamette River</li> <li>• <b>South</b> – Willamette and Pacific Railroad Tracks</li> <li>• <b>West</b> – Independence Highway</li> </ul> | <ul style="list-style-type: none"> <li>• Gibson Hill Road</li> <li>• Highway 20</li> <li>• Metge Avenue</li> <li>• North Albany Road</li> <li>• Oak Grove Drive</li> <li>• Quarry Road</li> </ul> |

It may be necessary to recommend or require that specific evacuation routes be used after an earthquake occurs. More than two-thirds of the evacuation routes pass over a bridge or major culvert or under a road. After a major earthquake of 5.5 or greater, no evacuation route that passes over a bridge or culvert or under a road way will be used until inspections have taken place and the safety of that bridge or culvert is approved. In these cases, alternative routes for both emergency response and evacuation will be developed and recommended by emergency services or the ECC and communicated to the LBCC community by the previously mentioned communication tools that are available at the time.

The LBCC Public Safety Office maintains a City of Albany Evacuation Route map with indications of the vulnerable bridge and overpass sections. Bridges will be inspected on the evacuation routes according to the priorities on the chart below.

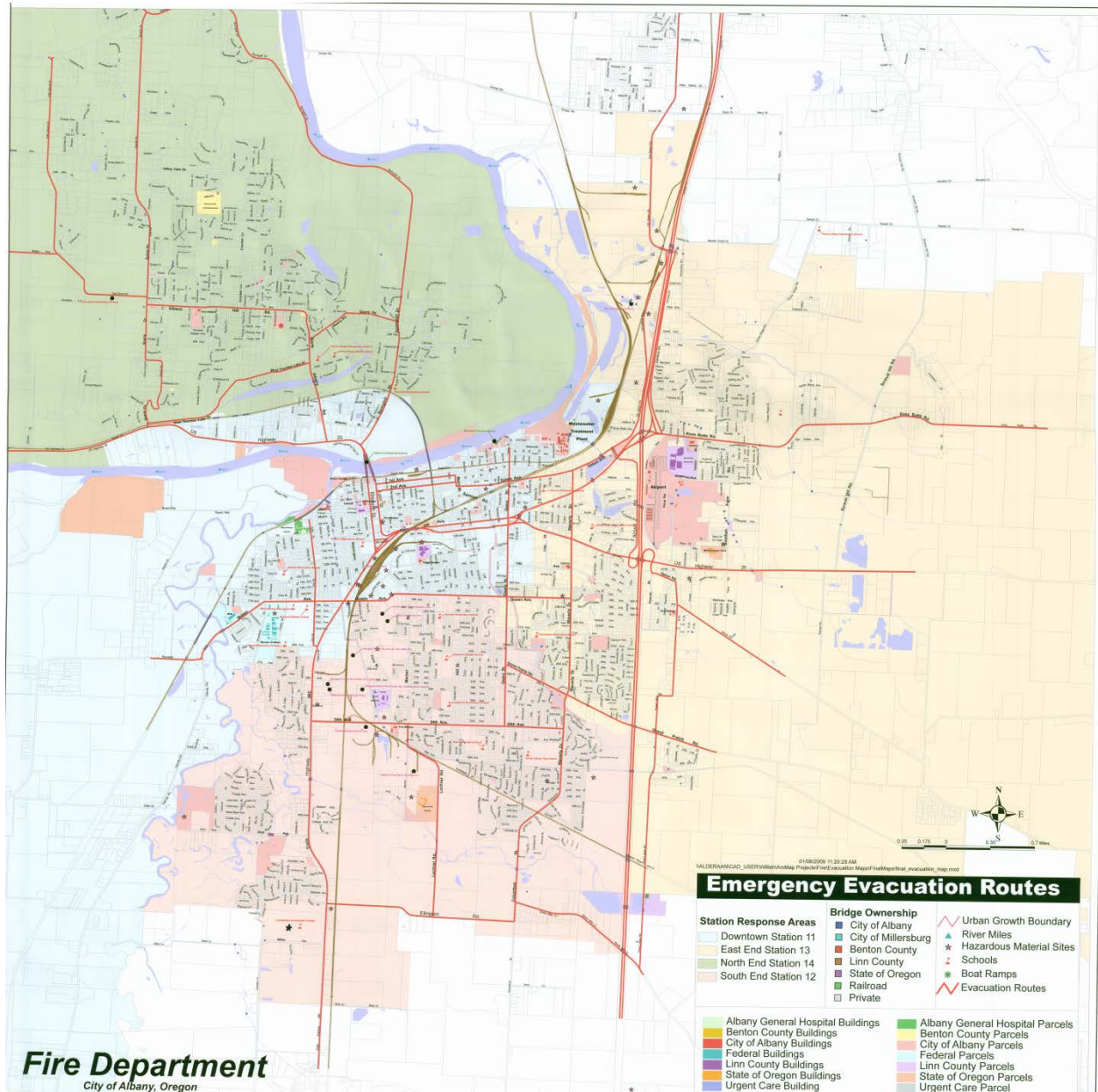
### City of Albany Bridge Inspection Priorities:

| 1st Priority  |  |       |                      |                            |                   |              |
|---------------|--|-------|----------------------|----------------------------|-------------------|--------------|
| Bridge Number | Bridge Location  | Owner | Creek or Stream/Road | Bridge Type                | Bridge Length(ft) | Census Tract |
| 9806          | Hwy 20 at Lyon Street  | ODOT  | Willamette           | Bridge                     |                   | 204          |
| 01025D        | Hwy 20 at Ellsworth Street                                       | ODOT  | Willamette           | Bridge                     | 1090              | 204          |
| 14570A        | North Albany Road at Thornton Lake                               | BC    | Thornton Lake        | Bridge                     | 60                | 101          |
| 2380          | OR Hwy 99E (Pacific Blvd) at Lyon street and Jackson street Exit | ODOT  |                      | Bridge                     | 552               | 204          |
| 2482          | Periwinkle Creek, OR 99E SB (Pacific Blvd)                       | ODOT  | Periwinkle           | Bridge                     |                   | 204/208      |
| 18295         | Periwinkle Creek, OR 99E NB (9th AVE)                            | ODOT  | Periwinkle           | Bridge                     | 44                | 208/204      |
| 02515A        | OR Hwy 99 E (Pacific Blvd) at Cox Creek                          | ODOT  | Cox                  | Bridge                     | 57                | 204          |
| 08221C        | I-5 SB over Knox Butte Road                                      | ODOT  | Knox Butte Road      | Bridge                     | 125               | 205/201      |
| 08221A        | I-5 NB over Knox Butte   | ODOT  | Knox Butte Road      | Bridge                     | 129               | 205/201      |
| 08221D        | I-5 SB over OR 99E NB  | ODOT  | OR HWY 99E           | Bridge                     | 139               | 205/201      |
| 08221B        | I-5 NB over OR 99E NB  | ODOT  | OR HWY 99E           | Bridge                     | 125               | 205/201      |
| 43C15         | Santiam-Albany Canal, 4th Ave                                    |       |                      |                            |                   |              |
| 19859         | Santiam-Albany Canal, 5th Ave                                    | COA   | Canal                | Bridge (Pre-stressed Slab) | 26                | 203          |
| 18470         | Santiam-Albany Canal, 6th Ave                                    | COA   | Canal                | Bridge (Pre-stressed Slab) | 30.2              | 203          |
| 43C13         | Santiam-Albany Canal, 7th Ave                                    | COA   | Canal                | Concrete Slab              | 23                | 203          |
| 43C02         | Santiam-Albany Canal, 9th Ave                                    | COA   | Canal                | Bridge (Concrete Slab)     | 35                | 203          |
| 21054         | Waverly Street at Periwinkle                                     | COA   | Periwinkle           | Culvert                    | 18                | 205/206      |
| 02481A        | OR Hwy 99E (Pacific Blvd) and Queen Street                       | ODOT  | Canal                | Culvert                    | 32                | 203/208      |
| 00737A        | OR Hwy 99 (Pacific Blvd) and Oak Creek                           | ODOT  | Oak                  | Bridge                     | 92                | 203/207      |
| 21051         | 34 Avenue at canal   | COA   | Canal                | Culvert                    | 12                | 207/208      |
| 19639         | Queen Street at Geary Street                                     | COA   | Periwinkle           | Culvert                    | 15                | 208/206      |
| 21049         | Waverly Street at Canal  | COA   | Canal                | Culvert                    | 12                | 206          |
| 12405         | Columbus Street at Oak Creek                                     | LC    | Oak                  | Bridge                     | 101               | 206          |

| 2nd Priority  |                                      |       |                      |             |                   |              |
|---------------|--------------------------------------|-------|----------------------|-------------|-------------------|--------------|
| Bridge Number | Bridge Location                      | Owner | Creek or Stream/Road | Bridge Type | Bridge Length(ft) | Census Tract |
| 19858         | 53 <sup>rd</sup> Street at Oak Creek | COA   | Oak                  | Bridge      | 202               | 203          |
| 8224          | Grand Prairie Rd over I-5            | ODOT  | Grand Prairie        | Bridge      | 252               | 206/201      |
| 12729         | Knox Butte at Truax Creek            | LC    | Truax                | Bridge      | 46                | 201          |
| 43C06         | Salem Avenue at Periwinkle Creek     | ODOT  | Periwinkle           | Bridge      | 77                | 204          |
| 43C08         | Salem Avenue at Cox Creek            | COA   | Cox                  | Bridge      | 47                | 204          |
| 12412         | Lochner at Oak Creek #1(North)       | COA   | Oak                  | Bridge      | 95                | 207          |
| 12411         | Lochner at Oak Creek #2 (South)      | COA   | Oak                  | Bridge      | 114               | 207          |
|               | Lochner South of 34th                |       |                      |             |                   |              |



## City of Albany Emergency Evacuation Routes:

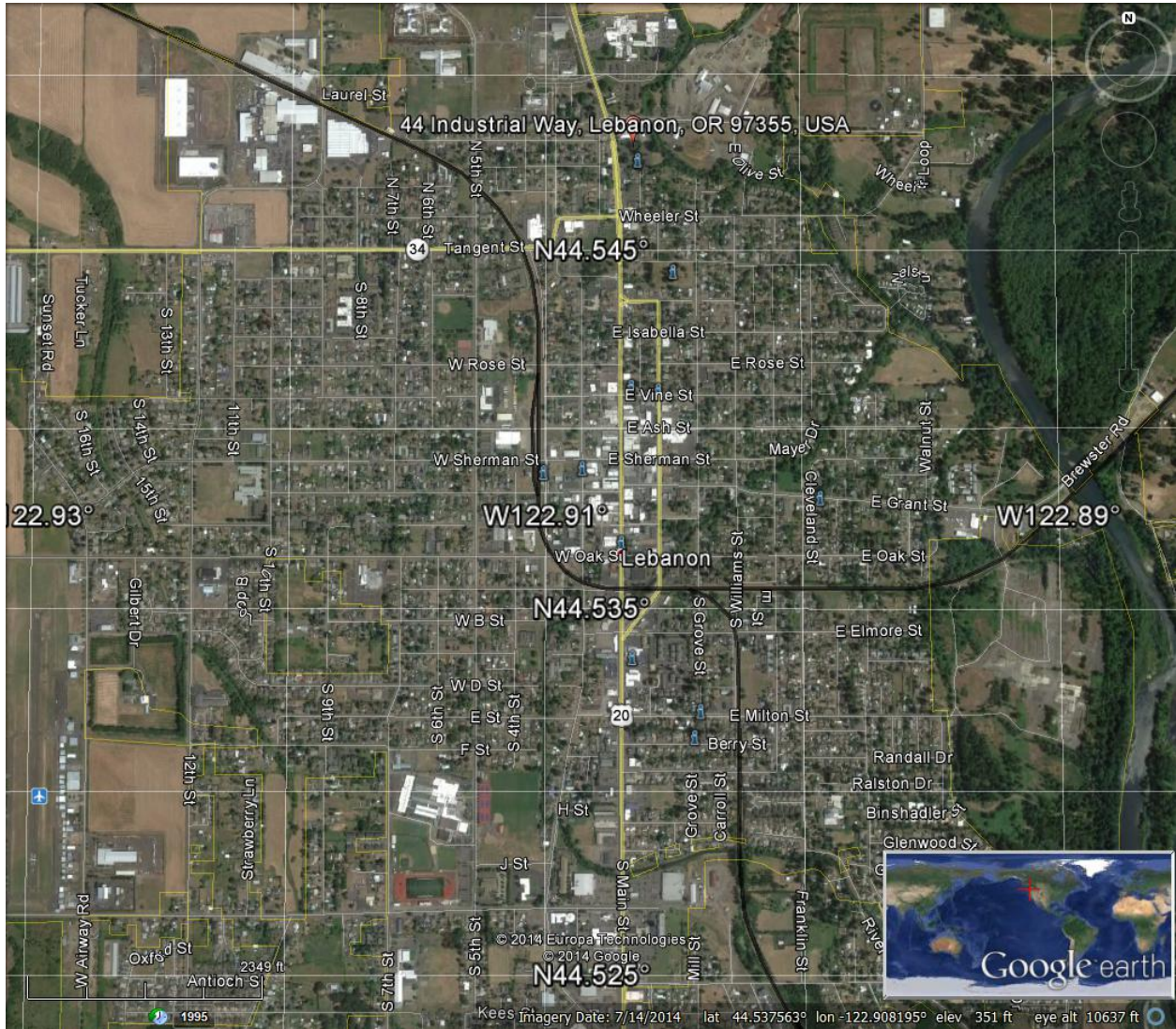


AlbanyEvac\_ColorMa  
p.pdf

or click the link to access:

<https://drive.google.com/a/linnbenton.edu/file/d/0BzdCtwPun5VqOHUwYmFYcWhOc1U/view?usp=sharing>

**In Lebanon**, the City Public Works Director and Police Chief are responsible to determine optimal traffic flow and movement priorities from residences to highways in an emergency, identifying emergency traffic routes, proposing location of roadblocks for evacuation movement, and coordinating transportation services, equipment and personnel. LBCC Incident Command team should coordinate the evacuation of all Lebanon campuses in accordance to the direction provided by or obtained from these city agencies.



### Lebanon – Lebanon Campuses



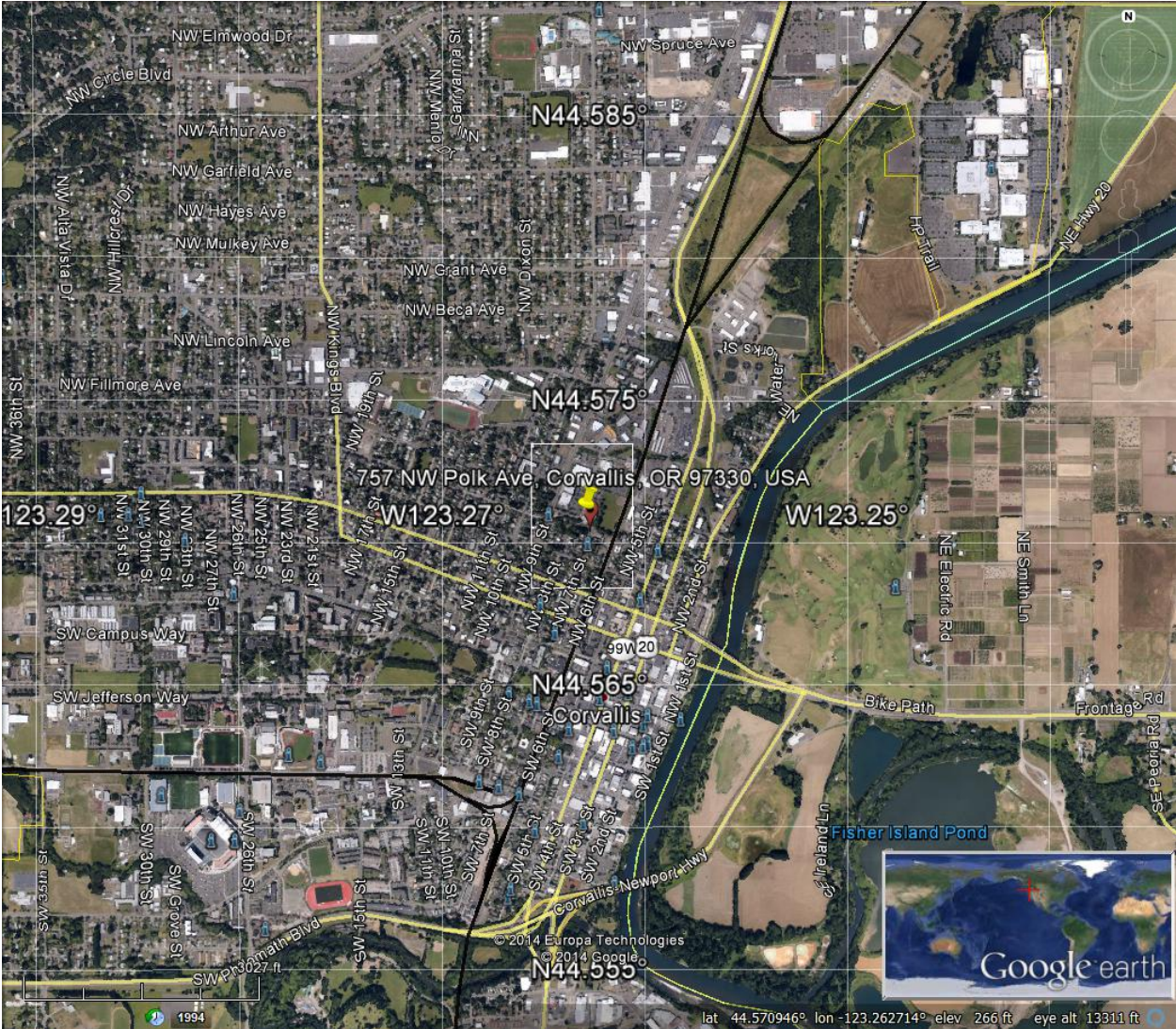
Or click the link to access:  
<https://drive.google.com/a/linnbenton.edu/file/d/0BzdCtwPun5VqSFgyUDJIc0R2WjQ/view?usp=sharing>



**In Corvallis**, the City Manager, or the City Manager's designee, proclaims an emergency and may order and conduct a mandatory evacuation from within the geographic area covered by the proclamation of emergency pursuant to ORS 401.305. Notice of the mandatory evacuation, including the specific geographic area, shall be communicated to all City departments and all local television and radio stations as well as newspapers.

The City Manager, or the City Manager's designee, in consultation with Fire, Police, Public Works, and any other department(s) deemed by such person to have the expertise to assist shall develop rules and guidelines for implementing a mandatory evacuation that, among other considerations, weigh the potential for injuries or death of City personnel conducting the evacuation against the potential benefits of having City personnel enter an area designated for mandatory evacuation.

LBCC Incident Command team shall coordinate the evacuation of all Corvallis campuses in accordance to the direction provided by or obtained from these Corvallis agencies.



Corvallis Benton Center campus

**Sheltering in Place**

If sufficient time is not available to evacuate, and/or the nature of the incident makes evacuation unsafe, the Incident Commander may choose to direct those in the affected area to shelter in place. Sheltering in place restricts affected people to their current locations. Other restrictions may also be necessary.

The City Police Department is primarily responsible for shelter-in-place warnings. LBCC campuses will follow established protocols for shelter-in-place.

**Return to Campuses**

The Incident Commander in conjunction with the college President or his designee will decide when staff and students may return to campus and will have the appropriate information disseminated. For large-scale evacuations in the areas of Albany, Corvallis, and/or Lebanon that decision will be made from within the city or county ECC and the dissemination of the necessary information through the media prior to LBCC communicating with its constituency.